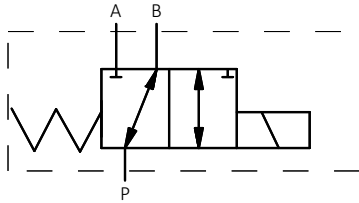


HVC-3/2-10

HVC-3/2-10 SERIES DIRECTIONAL VALVES
LINE MOUNTING

SYMBOL



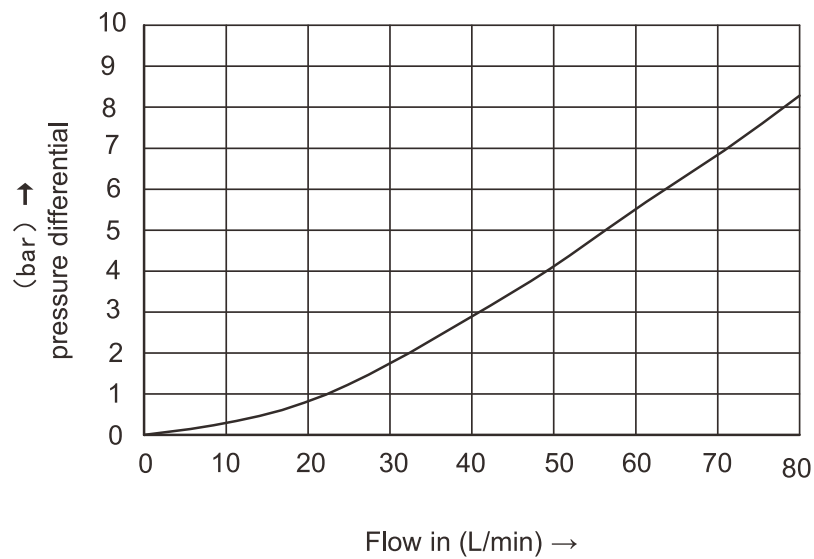
Technical data

Model	HVC-3/2-10
(L/min) Max .flow rate(L/min)	80
(Mpa) Max operating pressure(MPa)	25
Valve body (Material) Surface treatment	(casting) phosphating surface
Oil cleanliness	NAS1638 class 9 and ISO4406 class 20/18/15

Characteristic curves (measured with HLP46, Voil=40 °C ± 5 °C)

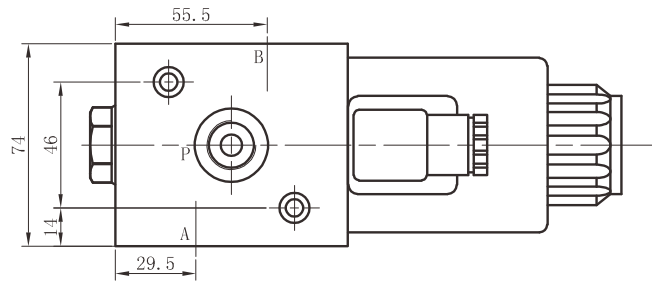
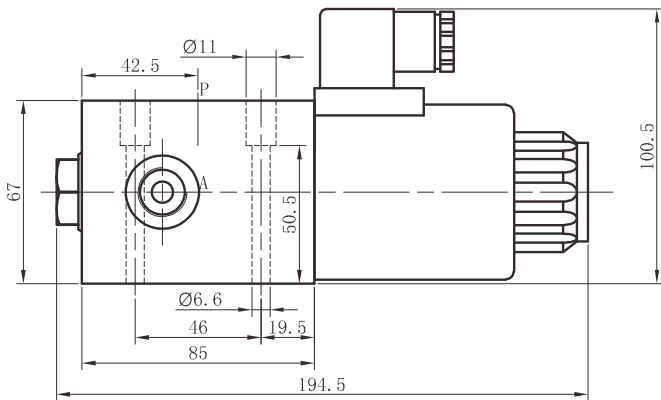
$\Delta p-q_v$ Characteristic curves

1=P1-A;B-P2 2=P1-C;D-P2



▶ Installation Dimensions

HVC-3/2-10



▶ Ordering Details

HVC-3/2-10	*	*	Z5L	*
------------	---	---	-----	---

Model

For further details

Threaded connection
G 1/2 SAE 8

Z5L=Large quadrate plug with light

Voltage DC12; DC24