



# PA1 - PA2 - PA3



DIESEL

PA1 70



PA2 80-100



PA3 150

| FEATURES                             | PA1 70                                  | PA2 80         | PA2 100        | PA3 150        |
|--------------------------------------|---|----------------|----------------|----------------|
| Voltage AC [V, Hz]                   | 230, 50/60                              | 230, 50        | 230, 50/60     | 230, 50        |
| Current max [A]                      | 2,9/3,5                                 | 4,1            | 4,5/5          | 14,5           |
| Power [W]                            | 550/650                                 | 750            | 805/900        | 3300           |
| Motor protection                     | IP55                                    | IP55           | IP55           | IP55           |
| On/Off Switch                        | Yes                                     | Yes            | Yes            | Yes            |
| Cable [m]                            | 2                                       | 2              | 2              | 2              |
| Duty cycle [min]                     | S1 Continuous                           | S1 continuous  | S1 continuous  | S2 30          |
| Nominal Flow Rate [l/min / GPM]      | 70 / 15,85                              | 80 / 21,13     | 100 / 26,42    | 150/ 39,63     |
| Max Pressure [bar / psi]             | 2                                       | 2.5            | 2.5            | 2.5            |
| Dry Suction height [m]               | 2                                       | 2              | 2              | 2              |
| Internal By-Pass                     | Yes                                     | Yes            | Yes            | Yes            |
| Inlet [BSP/G]                        | 1"                                      | 1"             | 1"             | 1"             |
| Outlet [BSP/G]                       | 1"                                      | 1"             | 1"             | 1"             |
| Pump body material                   | Cast Iron                               | Cast Iron      | Cast Iron      | Cast Iron      |
| Impeller material                    | Sintered Steel                          | Sintered Steel | Sintered Steel | Sintered Steel |
| Vanes material                       | POM                                     | POM            | POM            | POM            |
| Ring material                        | HNBR                                    | HNBR           | HNBR           | HNBR           |
| Gasket material                      | NBR                                     | NBR            | NBR            | NBR            |
| Internal filter                      | Yes                                     | Yes            | Yes            | Yes            |
| Motor support                        | Yes                                     | Yes            | Yes            | Yes            |
| Min/Max Temperature [°C]             | -20/+50                                 | -20/+50        | -20/+50        | -20/+50        |
| Max fluid viscosity [cSt] (a 40 °C): | 2 ÷ 5                                   | 2 ÷ 5          | 2 ÷ 5          | 2 ÷ 5          |
| Allowed fluids                       | diesel                                  | diesel         | diesel         | diesel         |
| Forbidden fluids                     | gas, alcohol, water, gasoline, kerosene |                |                |                |
| Loudness at less 1 meter [dB]        | < 70                                    | 85             | 85             | < 90           |
| Net weight [kg]                      | 8                                       | 13             | 13             | 16             |
| Gross weight [kg]                    | 8,5                                     | 13,5           | 13,5           | 16,5           |



category

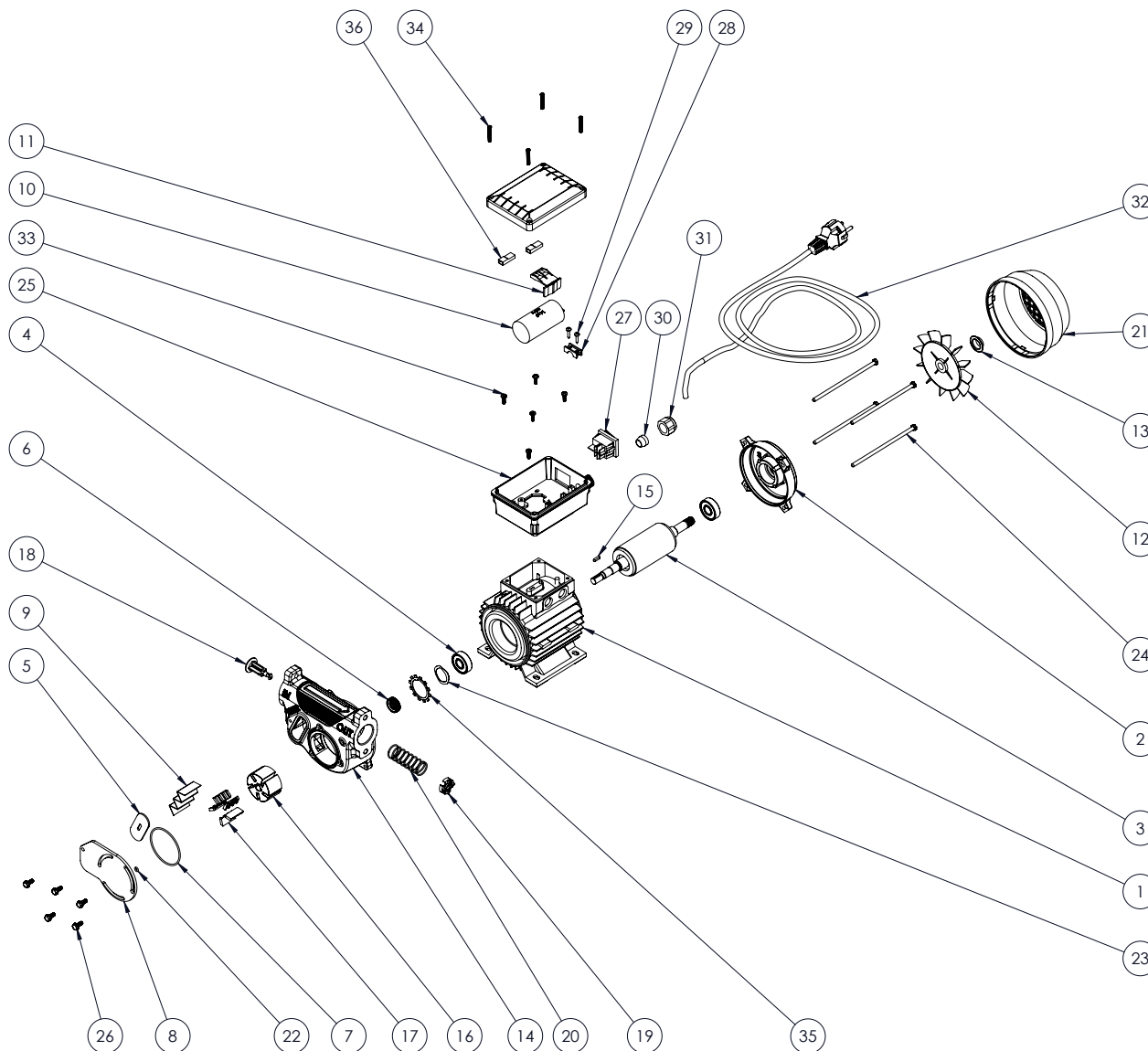
electric pump diesel

model

# PA1 70A 230V

MADE IN ITALY 

|    | CODE             | DESCRIPTION                 | QTY |
|----|------------------|-----------------------------|-----|
| 1  | ME033            | wound stator p80            | 1   |
| 2  | ME032            | machined shield p.80        | 1   |
| 3  | ME034            | motor shaft p.80            | 1   |
| 4  | 101001600000     | bearing 6201 2rs            | 2   |
| 5  | OR037            | filter seal                 | 1   |
| 6  | OR038            | motor shaft seal            | 1   |
| 7  | OR039            | o-ring nbr70 57x2 body pump | 1   |
| 8  | PA018            | swivel locking plate        | 1   |
| 9  | PA019            | inox filter 16x49           | 1   |
| 10 | PA020            | capacitor 14µf              | 1   |
| 11 | PA024            | capacitor lock              | 1   |
| 12 | PA025            | fan fb63 d11 black wo/ring  | 1   |
| 13 | PA026            | ring d11 for fan fb63 black | 1   |
| 14 | CP009X           | pump body pa 70l x-treme    | 1   |
| 15 | PA021            | pin 3x3x12 uni 6604-a       | 1   |
| 16 | 61000003         | rotor ø45                   | 1   |
| 17 | 71000522         | small vane                  | 5   |
| 18 | 71000520         | by-pass valve               | 1   |
| 19 | PA037            | black reinforced bypass cap | 1   |
| 20 | 16001005         | by-pass spring              | 1   |
| 21 | 140250500000     | mec 63 fan cover            | 1   |
| 22 | 11010040200      | o-ring 2015 nbr             | 1   |
| 23 | VT042            | compensation ring           | 1   |
| 24 | 610046000000     | tie rod m5 x 125            | 4   |
| 25 | PA023            | capacitor box               | 1   |
| 26 | VT046            | screw tc m5x12 flanged      | 5   |
| 27 | EL013            | blue switch 22x30           | 1   |
| 28 | 140250300000     | cable lock                  | 1   |
| 29 | VT004            | screw tc ø3,5x16            | 2   |
| 30 | 17001011         | cable gland rubber          | 1   |
| 31 | 17001012         | cable gland ring nut        | 1   |
| 32 | 190200000000     | shuko cable 230v            | 1   |
| 33 | VT048            | screw tc 3,5x12             | 5   |
| 34 | VT049            | screw tc 4x25               | 4   |
| 35 | VT050            | security washer             | 1   |
| 36 | 190110000000 6.3 | faston cover                | 2   |



Adam Pumps S.p.A.  
 Soc. con Socio Unico  
 via della resistenza 46/48 - 41011 Campogalliano (MO) ITALIA  
 Tel +39 059 528128 - Fax +39 059 528437 | www.adampumps.com - info@adampumps.com



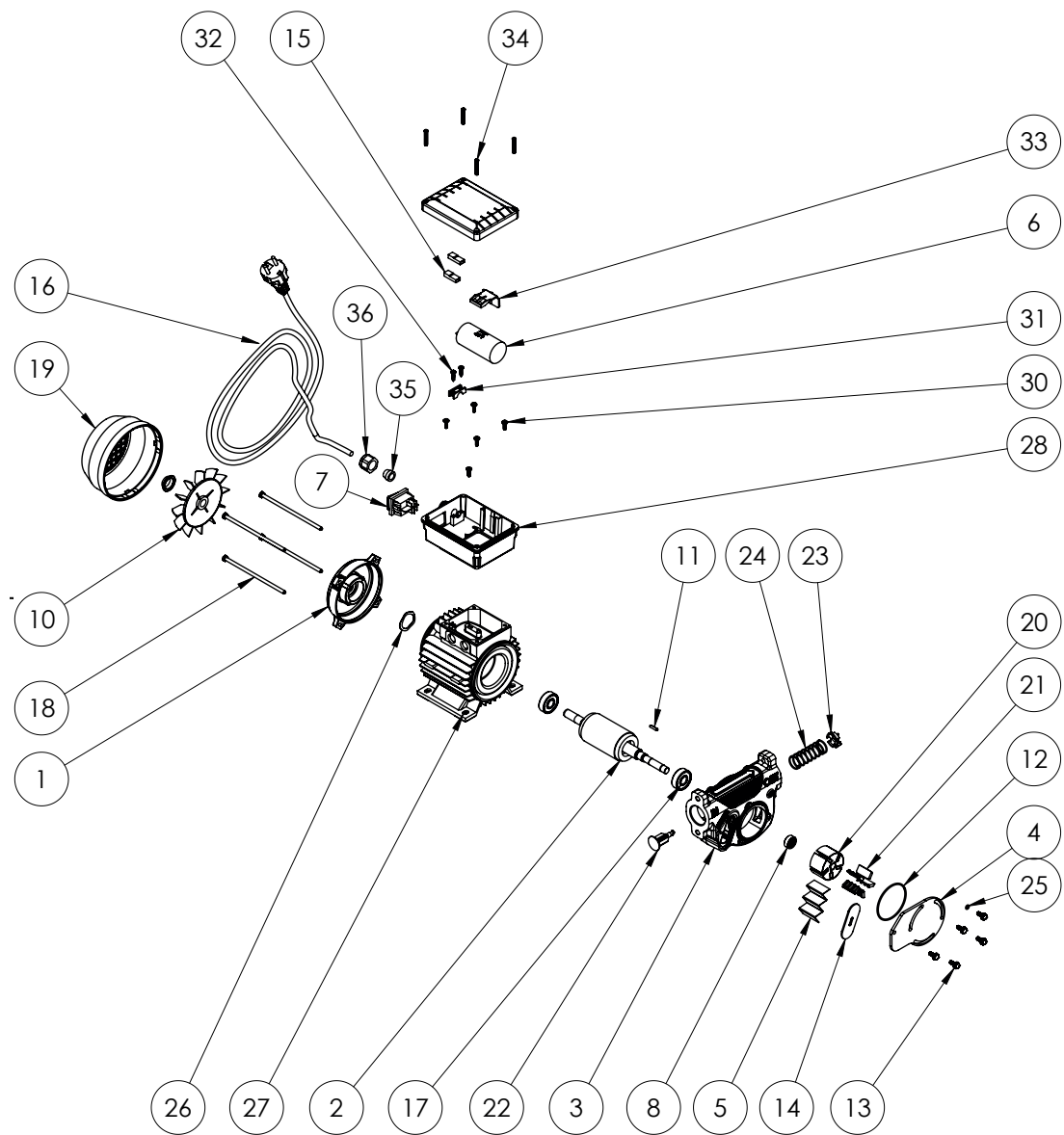
category

electric pump diesel

model

# PA1 70A 115V

|    | CODE         | DESCRIPTION            | Q.TY |
|----|--------------|------------------------|------|
| 1  | 15501600000X | MACHINED SHIELD MEC 63 | 1    |
| 2  | 6290150000L  | ENGINE SHAFT MEC 63    | 1    |
| 3  | CP009X       | BODY PUMP PA 70L       | 1    |
| 4  | PA018        | SWIVEL LOCKING PLATE   | 1    |
| 5  | PA019        | INOX FILTER 16X49      | 1    |
| 6  | PA020        | CAPACITOR 14µF 450V    | 1    |
| 7  | EL013        | BLUE SWITCH 22X30      | 1    |
| 8  | OR038        | SHAFT SEAL Ø19         | 1    |
| 10 | 140250400000 | FUN MEC 63             | 1    |
| 11 | PA021        | PIN 3x3x12 UNI 6604-A  | 1    |
| 12 | OR039        | O-RING NBR70 57x2      | 1    |
| 13 | VT046        | SCREW TE M5X12         | 5    |
| 14 | OR037        | FILTER SEAL            | 1    |
| 15 | 190110000000 | COPRIFASTON 6.3        | 2    |
| 16 | 190200000000 | SHUKO CABLE 230V       | 1    |
| 17 | 101001600000 | BEARING 6201 2RS       | 2    |
| 18 | 61004600000  | TIE ROD M5 x 125       | 4    |
| 19 | 140250500000 | FUN COVER MEC 63       | 1    |
| 20 | 610000003    | ROTOR Ø45              | 1    |
| 21 | 71000522     | SMALL VANE             | 5    |
| 22 | 71000520     | BY-PASS VALVE          | 1    |
| 23 | PA037        | BLACK BYPASS CAP       | 1    |
| 24 | 16001005     | BY-PASS SPRING         | 1    |
| 25 | 11010040200  | O-Ring 2015 NBR        | 1    |
| 26 | VT042        | COMPENSATION RING      | 1    |
| 27 | 232204000000 | WOUND STATOR MEC 63    | 1    |
| 28 | PA023        | CAPACITOR BOX          | 1    |
| 32 | VT004        | SCREW TC Ø3,5x16       | 2    |
| 33 | 140250300000 | CABLE LOCK             | 1    |
| 34 | VT037        | SCREW TC M4x6 UNI 8112 | 5    |
| 35 | PA024        | CAPACITOR LOCK         | 1    |
| 36 | VT049        | SCREW TC 4X25          | 4    |





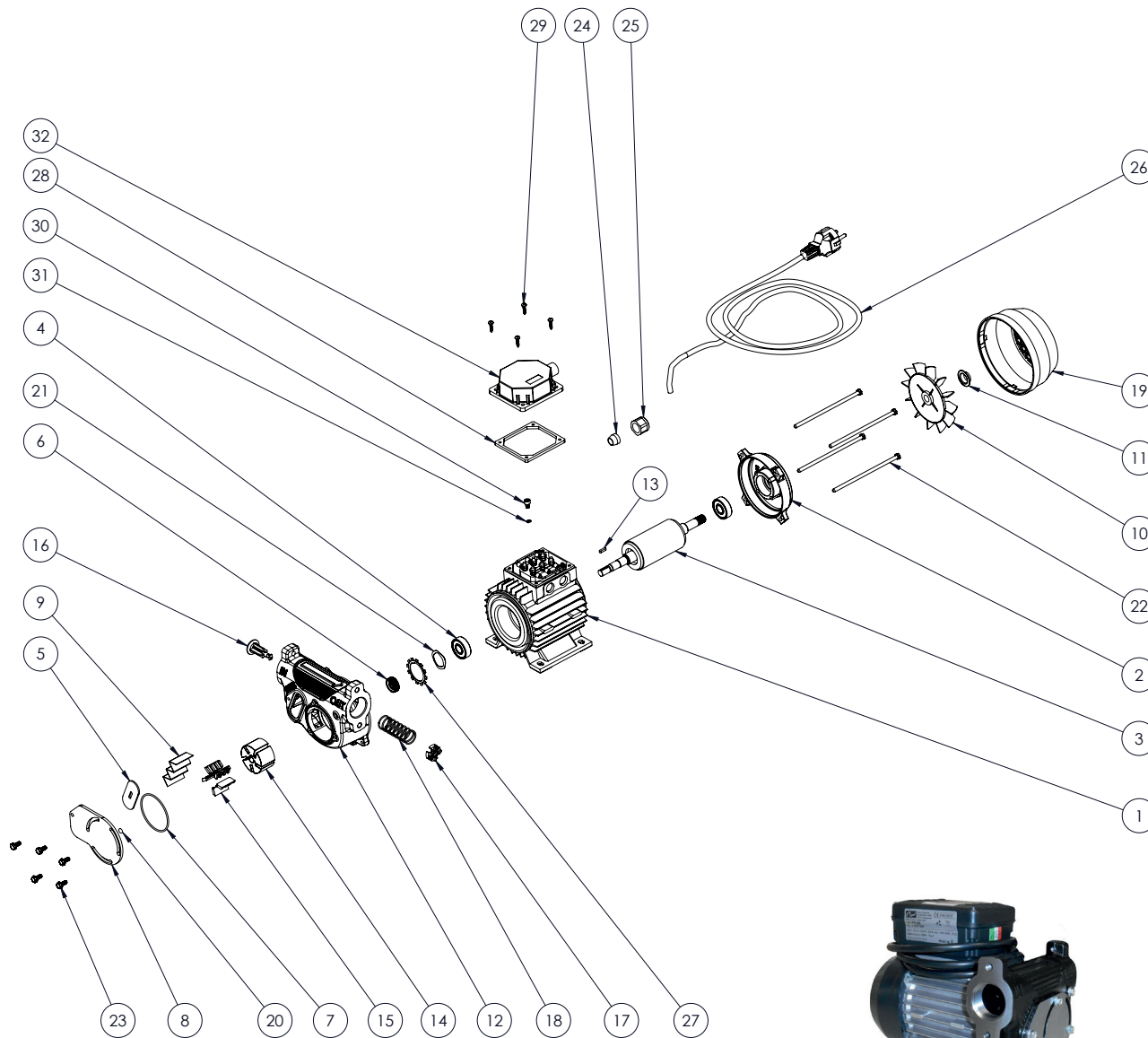
category

electric pump diesel

model

# PA1 70A 380V

|    | CODE.         | DESCRIPTION                  | QTY |
|----|---------------|------------------------------|-----|
| 1  | ME036         | Stator wrapped MEC 63        | 1   |
| 2  | ME032         | worked shield MEC 63         | 1   |
| 3  | ME037         | Crankshaft MEC 63            | 1   |
| 4  | 101001600000  | Radial ball bearing 6201 2RS | 2   |
| 5  | OR037         | filter seal                  | 1   |
| 6  | OR038         | inox Seal 10197 TCV 10X19X7  | 1   |
| 7  | OR039         | O-RING NBR70 57x2            | 1   |
| 8  | PA018         | swivel closing plate         | 1   |
| 9  | PA019         | inox filter 16x49            | 1   |
| 10 | PA025         | fan MEC 63                   | 1   |
| 11 | PA026         | fan ring Ø12 MEC 63          | 1   |
| 12 | CP009X        | body pump                    | 1   |
| 13 | PA021         | Tab 3x3x12 UNI 6604-B        | 1   |
| 14 | 61000003      | rotor Ø45                    | 1   |
| 15 | 71000522      | vane                         | 5   |
| 16 | 71000520      | by pass valve                | 1   |
| 17 | PA037         | plate                        | 1   |
| 18 | 16001005      | by pass spring 60-80-100     | 1   |
| 19 | 140250500000  | fan cover MEC 63             | 1   |
| 20 | 11010040200   | O-Ring 2015 NBR              | 1   |
| 21 | VT042         | Compensation ring            | 1   |
| 22 | 610046000000  | Tie M5 x 125                 | 4   |
| 23 | VT046         | screw TE M5X12               | 5   |
| 24 | 17001011      | Grommet cable press          | 1   |
| 25 | 17001012      | Cable ring nut               | 1   |
| 26 | 1902000000000 | cabl + schuko plug 230V      | 1   |
| 27 | VT050         | security washer              | 1   |
| 28 | PA032         | seal FV 63 / 71 - 2          | 1   |
| 29 | VT004         | screw TC Cross Ø3,5x16       | 4   |
| 30 | VT002         | screw TCCE M5x8 DIN 7500 E   | 1   |
| 31 | 80301400000   | washer Grower Ø4             | 1   |
| 32 | PA031         | board cover MEC63 380V       | 1   |
| 33 | PA001         | board 380V                   | 1   |

Adam Pumps S.p.A.  
Soc. con Socio Unico

via della resistenza 46/48 - 41011 Campogalliano (MO) ITALIA

Tel +39 059 528128 - Fax +39 059 528437 | www.adampumps.com - info@adampumps.com



category

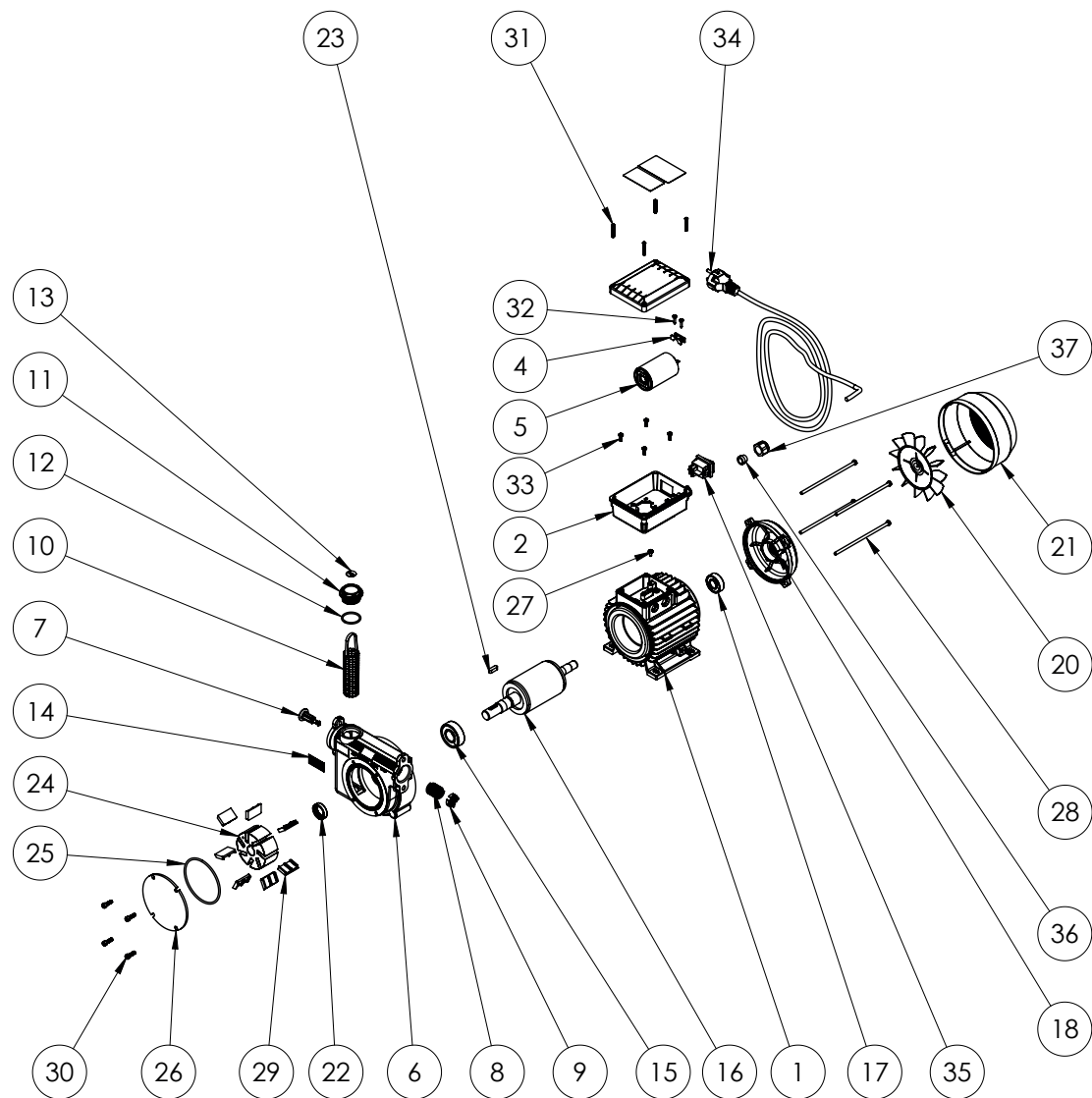
electric pump diesel

model

# PA2 80- 100 230V

| CODE. | DESCRIPTION  | Q.TY                       |   |
|-------|--------------|----------------------------|---|
| 1     | 64100000000  | Wrapped stator MEC 71 230V | 1 |
| 2     | PA023        | capacitor holder + cap     | 1 |
| 4     | 140250300000 | Cable lock                 | 1 |
| 5     | 190061000000 | Capacitor 25 µF            | 1 |
| 6     | -            | body pump                  | 1 |
| 7     | 71000520     | bypass valve               | 1 |
| 8     | 16001005     | by pass spring             | 1 |
| 9     | PA037        | plate                      | 1 |
| 10    | 41410000     | inox filter                | 1 |
| 11    | 17001094     | cap 1"                     | 1 |
| 12    | 18001008     | O-Ring 3118 NBR            | 1 |
| 13    | 71000587     | label "FILTER"             | 1 |
| 14    | 71000546     | label "clear filter"       | 1 |
| 15    | 101001880000 | Radial ball bearing        | 1 |
| 16    | 62901700000  | crankshaft MEC71           | 1 |
| 17    | 101001700000 | Radial ball bearing        | 1 |
| 18    | 15502600000X | worked shield MEC 71       | 1 |
| 19    | 84505000000  | Compensation ring Ø35      | 1 |
| 20    | 140260400000 | fan MEC 71 with ring Ø14   | 1 |
| 21    | 140260500000 | fan holder MEC 71          | 1 |
| 22    | 12001015020  | Sealing ring 20x30x7 SNBR  | 1 |
| 23    | 90505050000  | pin 6X6X20 UNI 6604-A      | 1 |
| 24    | 61000010     | Rotor Ø72                  | 1 |
| 25    | 18001022     | O-Ring 85X3 NBR            | 1 |
| 26    | 71000063     | pump holder 80-100 Lt.     | 1 |
| 27    | 82301410100  | screw TC Cross M4 x 8      | 1 |
| 28    | 6100450000Z  | Tie M5X135 ZnB             | 4 |
| 29    | 71000569     | big vane                   | 7 |
| 30    | 13001007     | screw TCCE M5x16           | 4 |
| 31    | VT049        | screw TC 4X25 UNI 9707     | 4 |
| 32    | VT004        | screw TC cross Ø3,5x16     | 2 |
| 33    | VT048        | screw TC cross 3.5x12      | 4 |
| 34    | 190200000000 | cable + schuko plug 230V   | 1 |
| 35    | EL013        | switch 22X30               | 1 |
| 36    | 17001011     | grommet gland              | 1 |
| 37    | 17001012     | Cable gland nut            | 1 |

| CODE. | DESCRIPTION |                        |
|-------|-------------|------------------------|
| 6     | 71000060    | body pump 80 L 1"BSPG  |
| 6     | 71000079    | body pump 100 L 1"BSPG |

Adam Pumps S.p.A.  
Soc. con Socio Unico

via della resistenza 46/48 - 41011 Campogalliano (MO) ITALIA

Tel +39 059 528128 - Fax +39 059 528437 | www.adampumps.com - info@adampumps.com





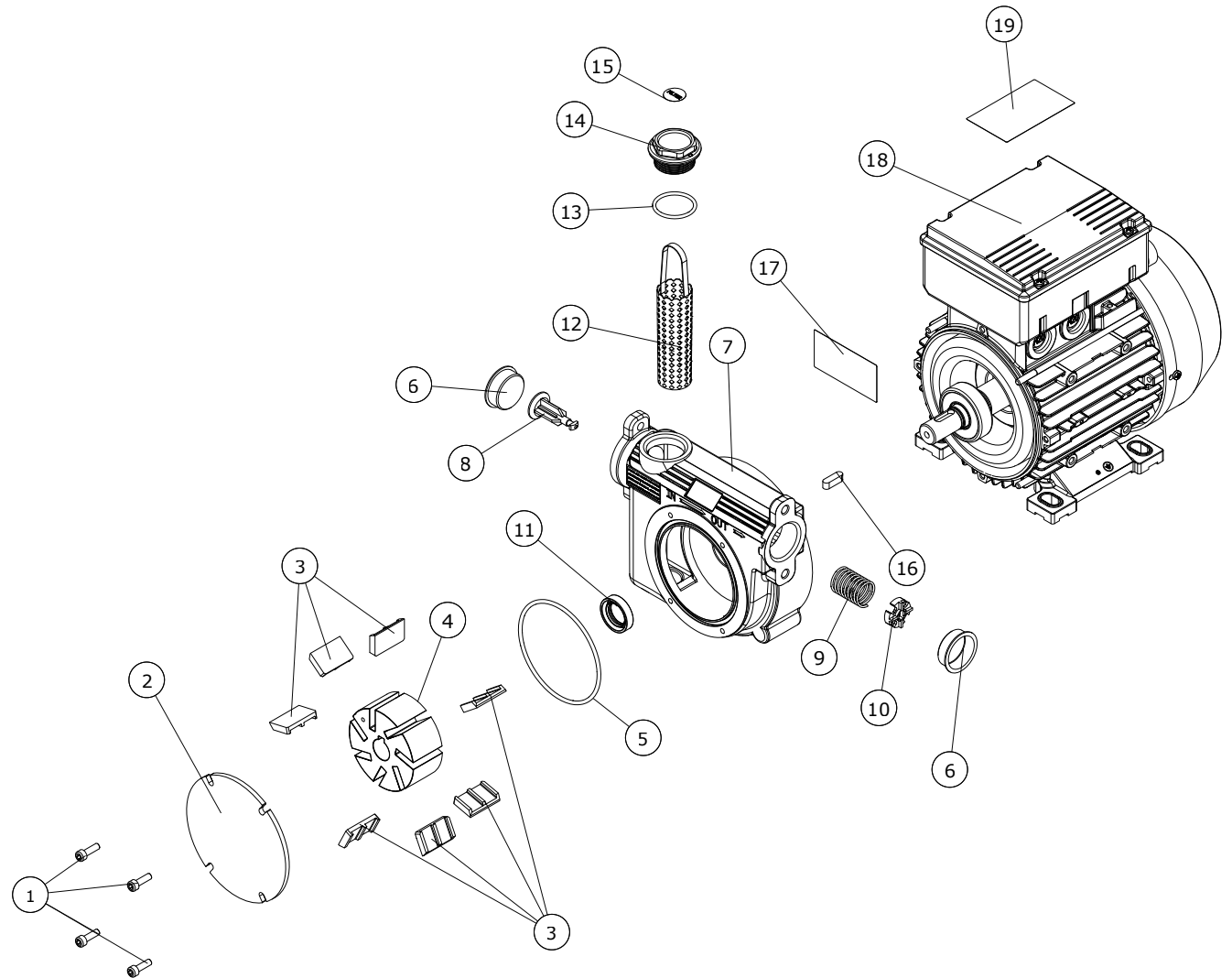
category

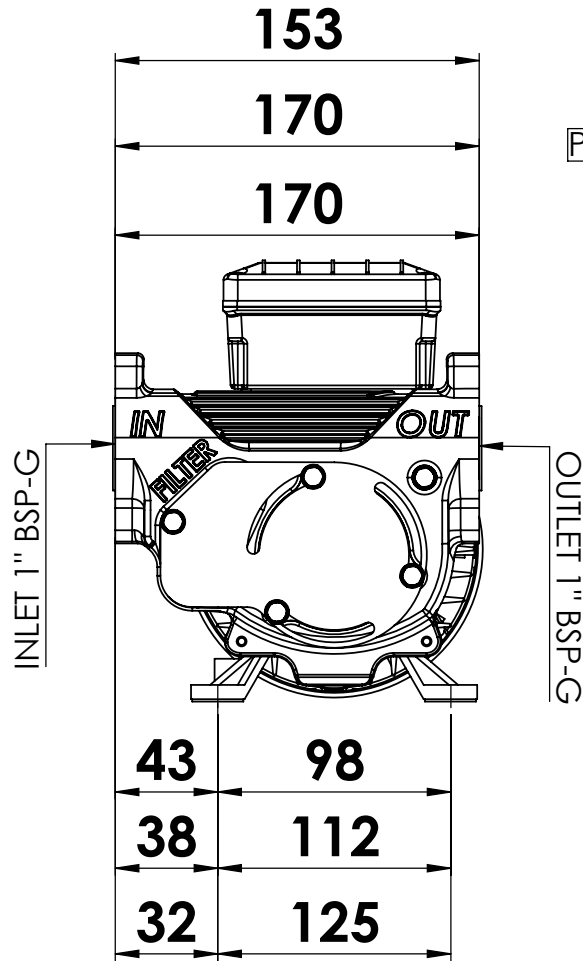
electric pump diesel

model

# PA3 150 230V

|    | CODE         | DESCRIPTION          | QTY |
|----|--------------|----------------------|-----|
| 1  | 13001007     | screw M5X16          | 4   |
| 2  | 71000063     | pump cover           | 1   |
| 3  | 71000569     | large vane           | 7   |
| 4  | 61000010     | rotor ø72            | 1   |
| 5  | 18001022     | O-Ring 85X3 NBR      | 1   |
| 6  | 163013500000 | protection cap ø31   | 2   |
| 7  | CP004        | pump body 150l       | 1   |
| 8  | 71000520     | bypass valve         | 1   |
| 9  | 16001005     | bypass spring        | 1   |
| 10 | PA037        | plate                | 1   |
| 11 | 12001015020  | sealing ring 20x30x7 | 1   |
| 12 | 41410000     | filter               | 1   |
| 13 | 18001008     | O-Ring 3118 NBR      | 1   |
| 14 | 17001094     | cap 1"               | 1   |
| 15 | 71000587     | "filter" label       | 1   |
| 16 | 90505050000  | key 6x6x20           | 1   |
| 17 | -            | ce label             | 1   |
| 18 | ME002        | motor 150l           | 1   |
| 19 | 71000653     | "danger" label       | 1   |





PA 1 70

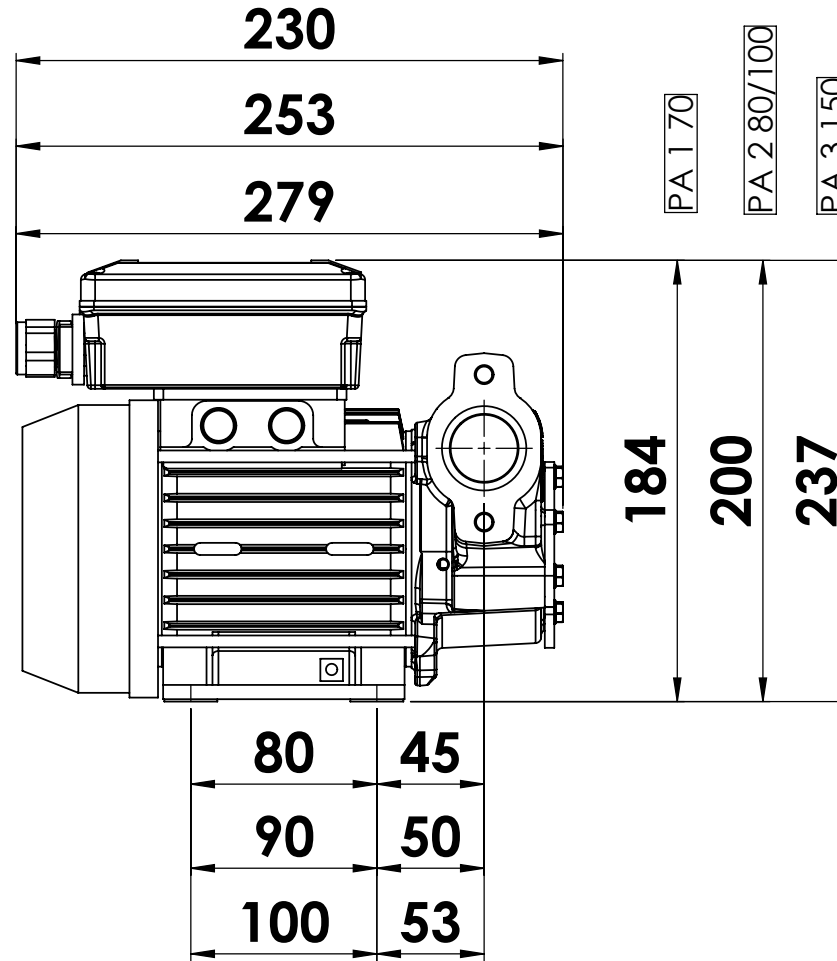
PA 2 80/100

PA 3 150

PA 1 70

PA 2 80/100

PA 3 150



PA 1 70

PA 2 80/100

PA 3 150



PA 1 70



PA 2 80-100



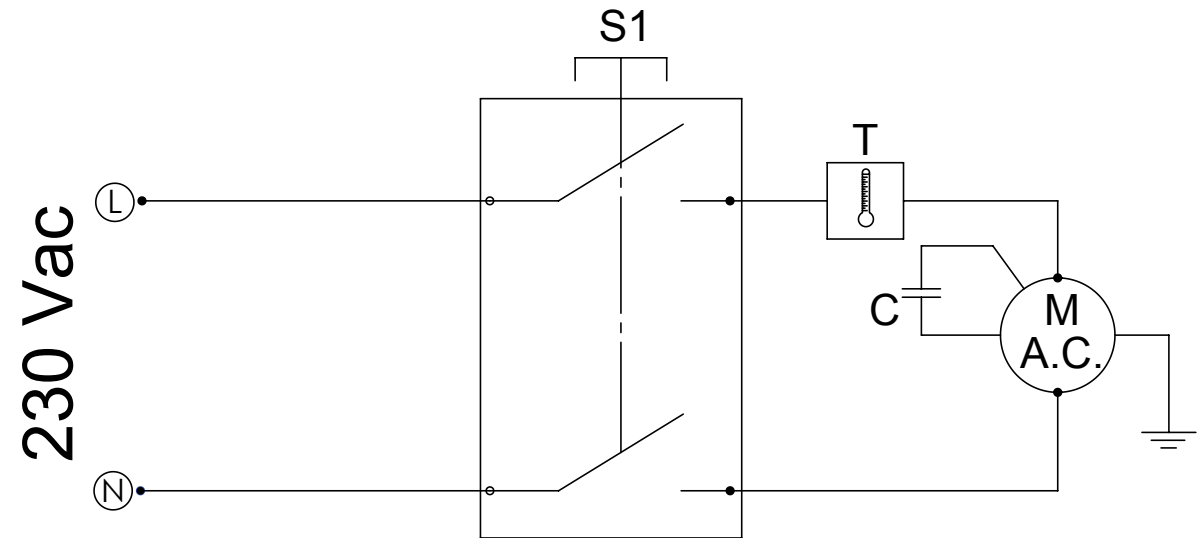
PA 3 150

tutte le dimensioni espresse in mm - all dimensions are in mm





# PA1 70



schema elettrico

wiring diagram


schaltpläne


schémas électriques


esquemas eléctricos


esquemas elétricos


электрические схемы


 S:1 interruttore ON-OFF  
M: motore  
T: protezione termica  
C: condensatore


 S1: interruptor ON-OFF  
M: motor  
T: protección térmica  
C: condensador

 S1: ON-OFF switch  
M: Motor  
T: Circuit Breaker  
C: Capacitor

 S1: Interruptor ON-OFF  
M: Motor  
T: Proteção Térmica  
C: condensador

 S1: ON - OFF Schalter  
M: Motor  
T: Temperaturschutz  
C: Kondensator

 S1: переключатель ВКЛ-ВЫКЛ  
M: Двигатель  
T: Термореле  
C: Конденсатор

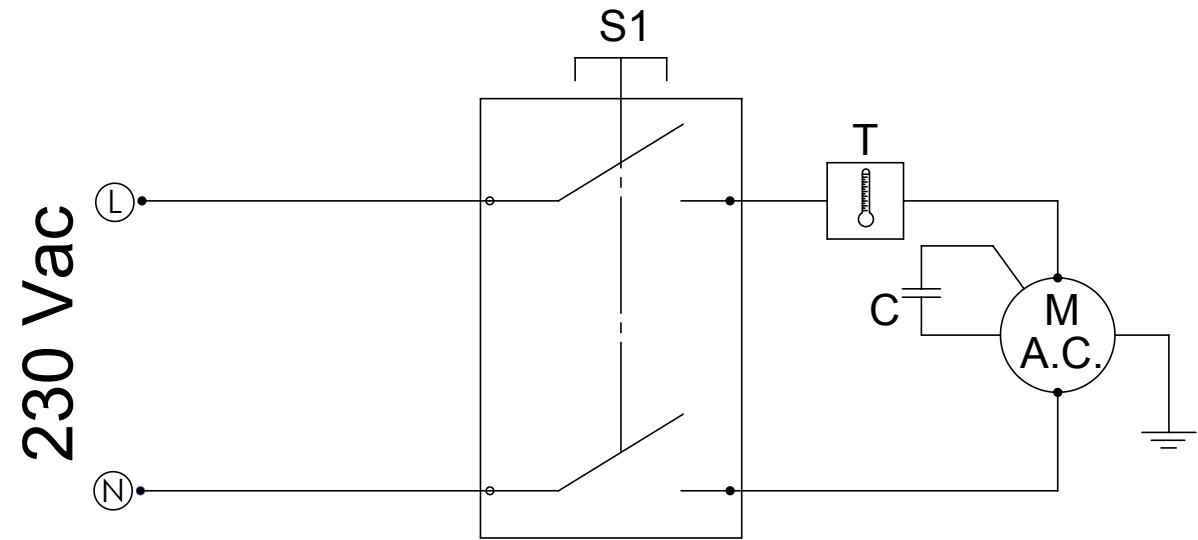
 S1: interrupteur ON-OFF  
M: moteur  
T: protection Thermique  
C: condensateur







# PA2 80



schema elettrico

wiring diagram


schaltpläne


schémas électriques


esquemas eléctricos


esquemas elétricos


электрические схемы


 S:1 interruttore ON-OFF  
M: motore  
T: protezione termica  
C: condensatore


 S1: interruptor ON-OFF  
M: motor  
T: protección térmica  
C: condensador

 S1: ON-OFF switch  
M: Motor  
T: Circuit Breaker  
C: Capacitor

 S1: Interruptor ON-OFF  
M: Motor  
T: Proteção Térmica  
C: condensador

 S1: ON - OFF Schalter  
M: Motor  
T: Temperaturschutz  
C: Kondensator

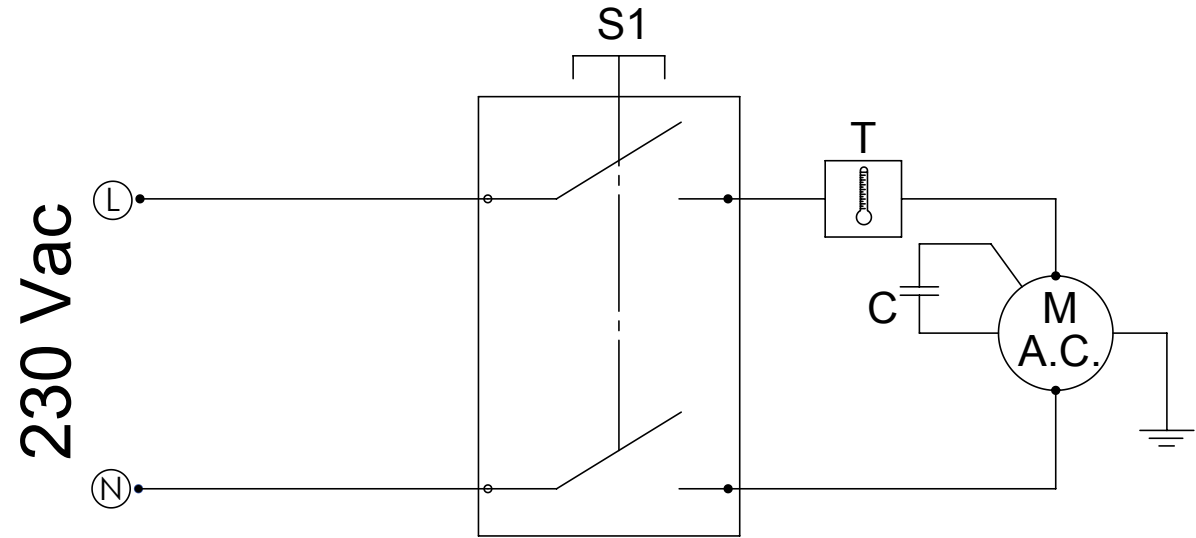
 S1: переключатель ВКЛ-ВЫКЛ  
M: Двигатель  
T: Термореле  
C: Конденсатор

 S1: interrupteur ON-OFF  
M: moteur  
T: protection Thermique  
C: condensateur





# PA2 100



schema elettrico

wiring diagram


schaltpläne


schémas électriques


esquemas eléctricos


esquemas elétricos


электрические схемы


 S:1 interruttore ON-OFF  
M: motore  
T: protezione termica  
C: condensatore


 S1: interruptor ON-OFF  
M: motor  
T: protección térmica  
C: condensador

 S1: ON-OFF switch  
M: Motor  
T: Circuit Breaker  
C: Capacitor

 S1: Interruptor ON-OFF  
M: Motor  
T: Proteção Térmica  
C: condensador

 S1: ON - OFF Schalter  
M: Motor  
T: Temperaturschutz  
C: Kondensator

 S1: переключатель ВКЛ-ВЫКЛ  
M: Двигатель  
T: Термореле  
C: Конденсатор

 S1: interrupteur ON-OFF  
M: moteur  
T: protection Thermique  
C: condensateur





# PA3 150



schema elettrico

wiring diagram

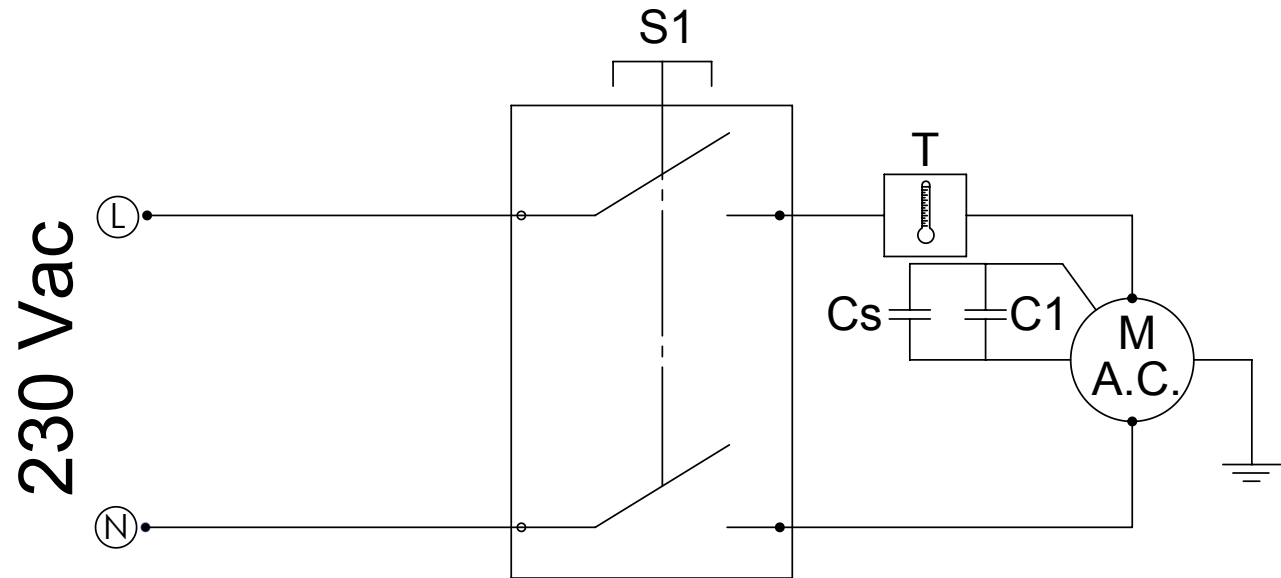
schaltpläne


schémas électriques

esquemas eléctricos


esquemas elétricos


электрические схемы





 S:1 interruttore ON-OFF  
M: motore  
T: protezione termica  
C1: Condensatore di fase  
Cs: Condensatore di start

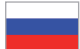
 S1: ON-OFF switch  
M: Motor  
T: Circuit Breaker  
C1: Phase capacitor  
Cs: Start capacitor

 S1: ON - OFF Schalter  
M: Motor  
T: Temperaturschutz  
C1: Phasencondensator  
Cs: Startkondensator

 S1: interrupteur ON-OFF  
M: moteur  
T: protection Thermique  
C1: Condensateur de phase  
Cs: Condensateur de marche

 S1: interruptor ON-OFF  
M: motor  
T: protección térmica  
C1: Condensador de fase  
Cs: Condensador de start

 S1: Interruptor ON-OFF  
M: Motor  
T: Proteção Térmica  
C1: Condensador de fase  
Cs: Condensador de arranque

 S1: переключатель ВКЛ-ВЫКЛ  
M: Двигатель  
T: Термореле  
C1: Конденсатор фазы  
Cs: Конденсатор запуска



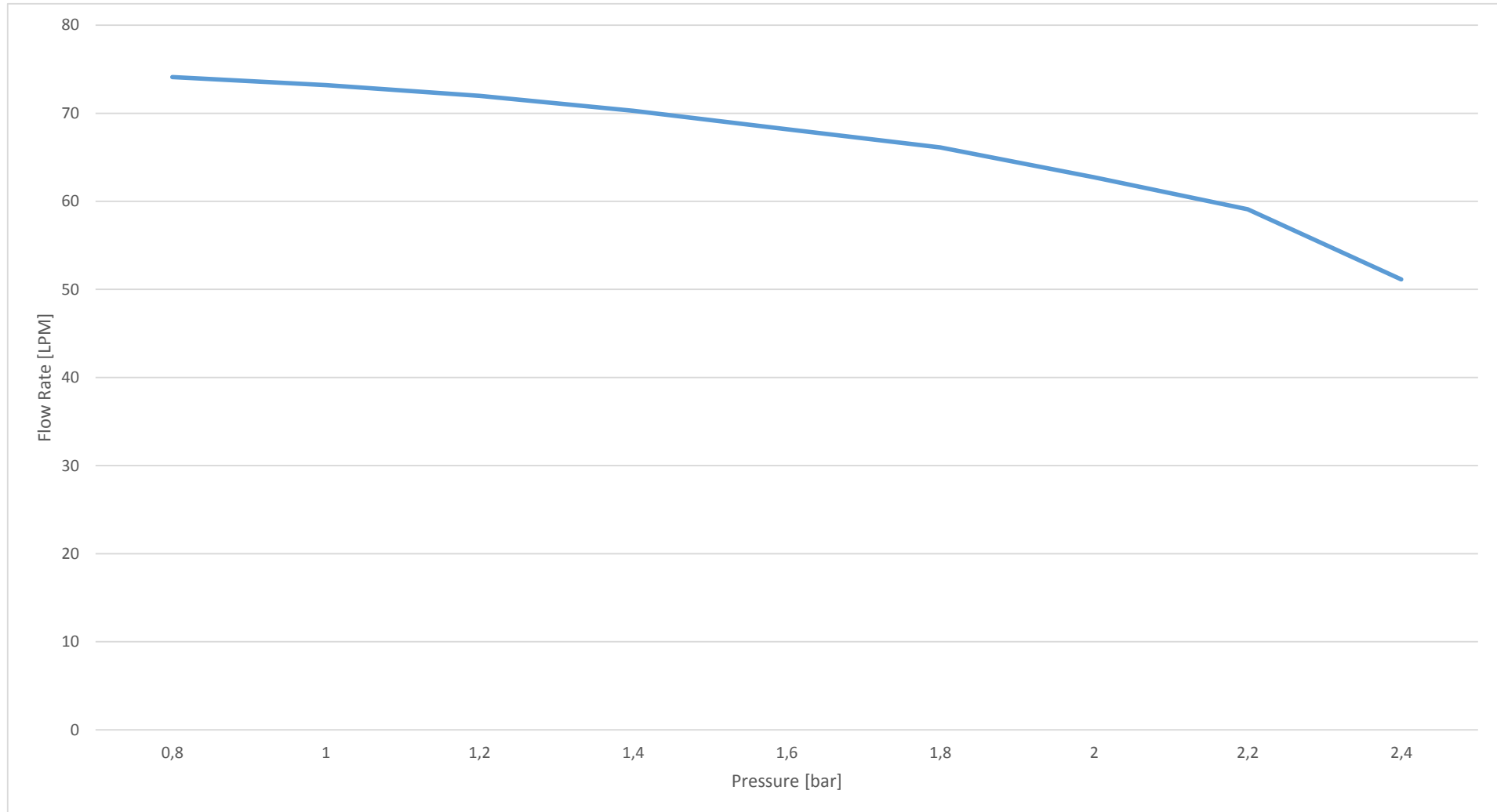
documento / document

prodotto / product

MADE IN ITALY 

curva di portata / flow rate curve

# PA1 70 230V 50Hz



Adam Pumps spa  
via della Resistenza 46/48  
41011 Campogalliano (MO) - ITALIA

tel. +39 059 528 128  
fax +39 059 528 437  
info@adampumps.com



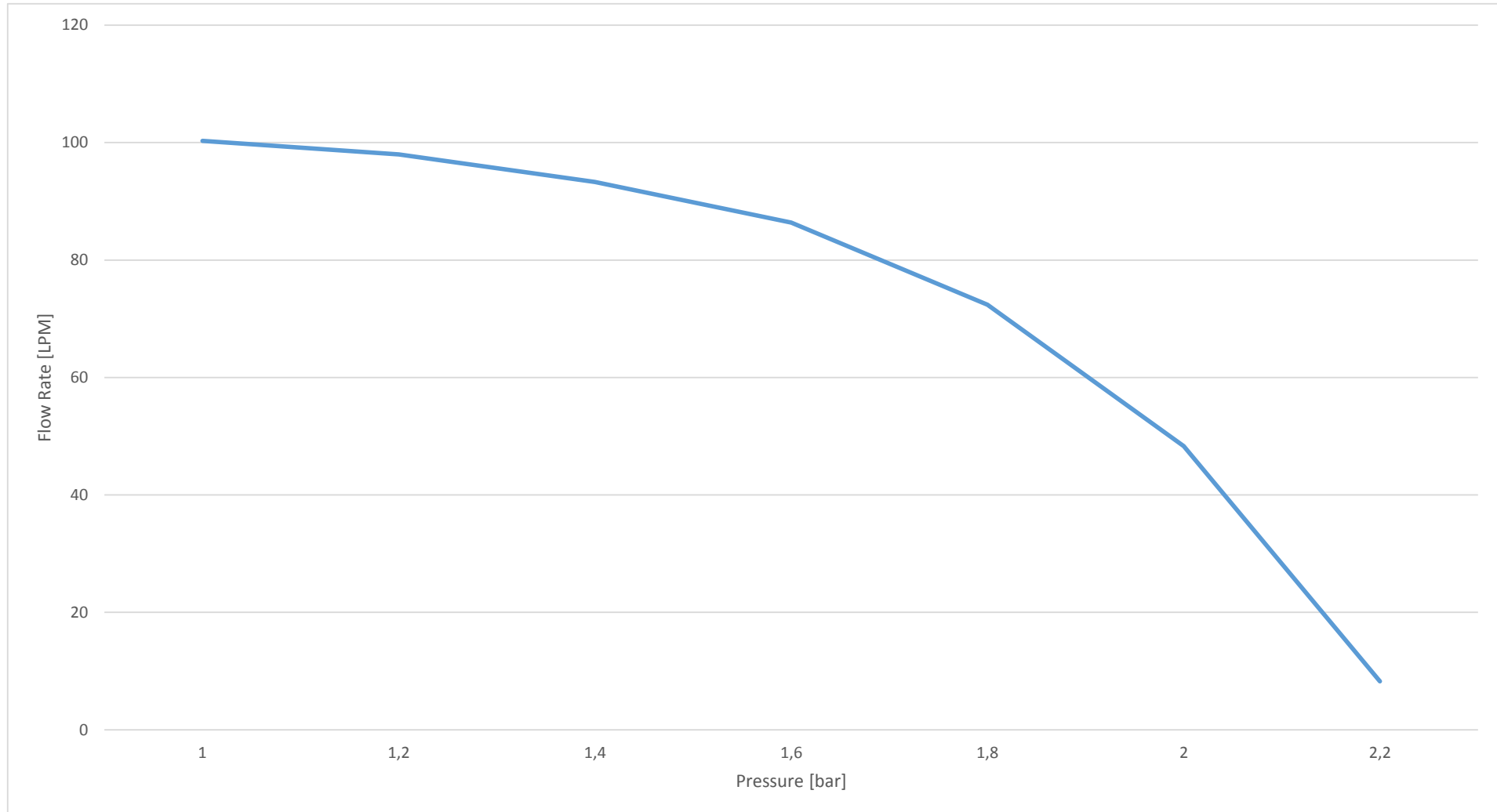
documento / document

prodotto / product

MADE IN ITALY 

curva di portata / flow rate curve

# PA2 100 230V 50Hz



Adam Pumps spa  
via della Resistenza 46/48  
41011 Campogalliano (MO) - ITALIA

tel. +39 059 528 128  
fax +39 059 528 437  
info@adampumps.com



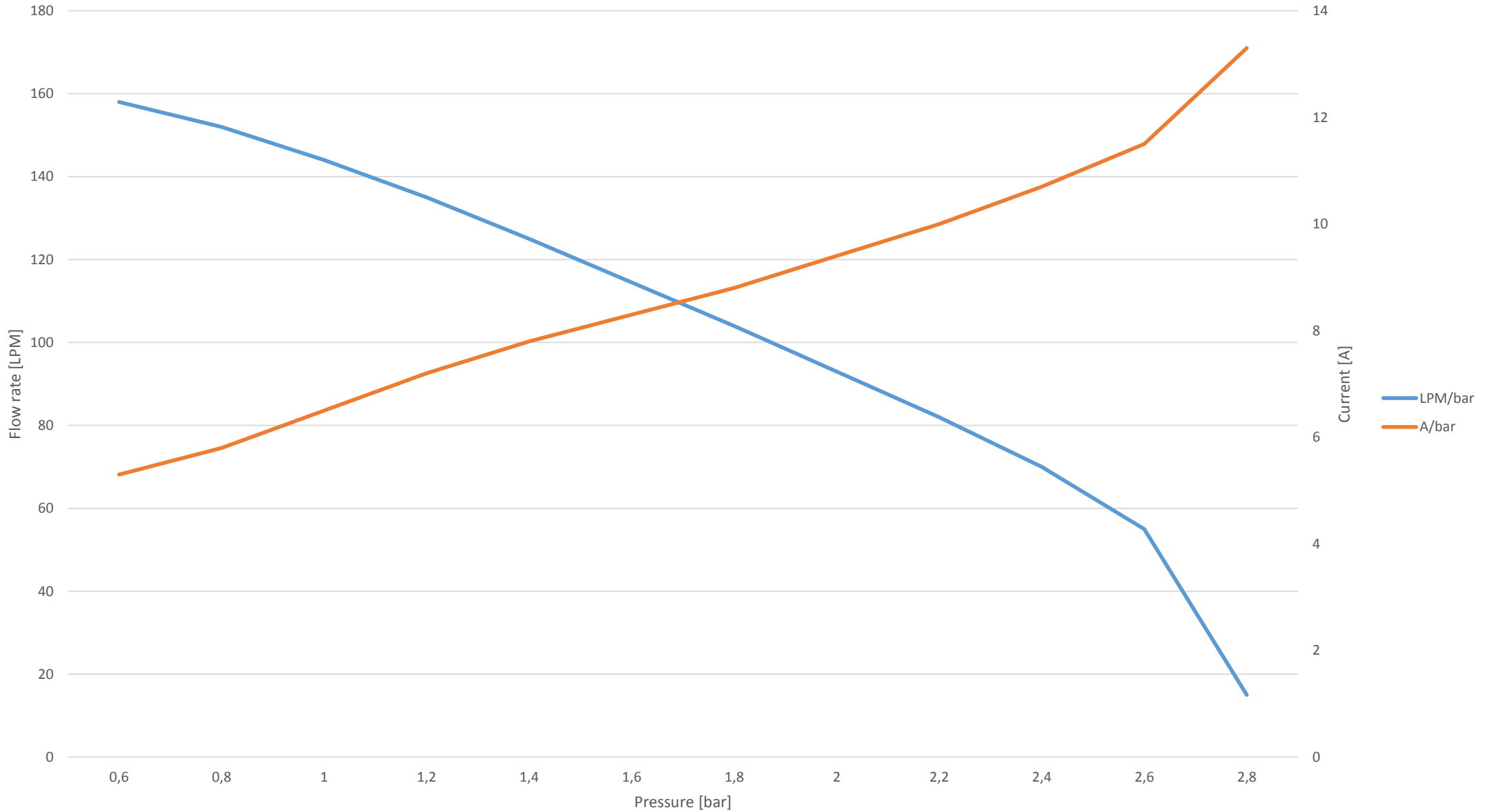
documento / document

prodotto / product

MADE IN ITALY 

curva di portata / flow rate curve

# PA3 150 230V 50Hz



Adam Pumps spa  
via della Resistenza 46/48  
41011 Campogalliano (MO) - ITALIA

tel. +39 059 528 128  
fax +39 059 528 437  
info@adampumps.com