



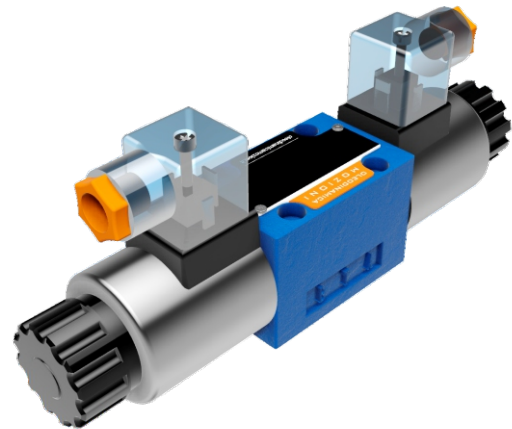
**DISTRIBUTORI
OLEODINAMICI**

WE6

**SOLENOID OPERATED
DIRECTIONAL CONTROL VALVES**

WE6 SERIES DIRECTIONAL CONTROL VALVES ARE SOLENOID OPERATED DIRECTIONAL SPOOL VALVES.

THESE VALVES ARE USED TO THE START, STOP AND DIRECTION OF FLOW.

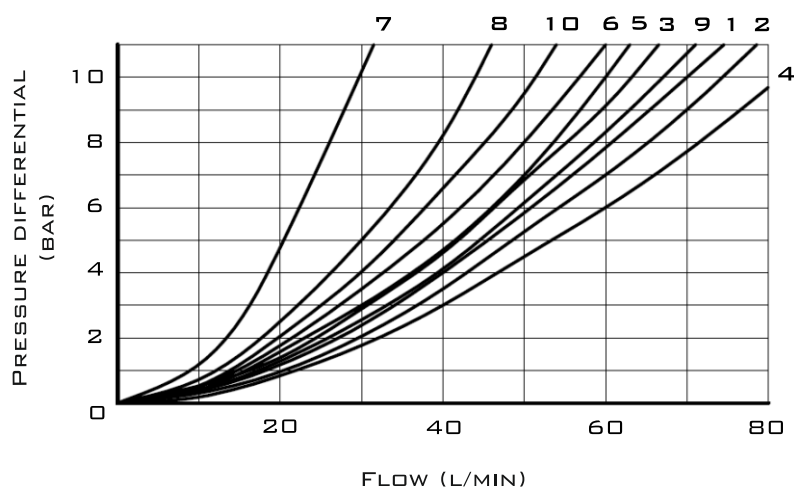


TECHNICAL DATA

| | | |
|------------------------------------|---------------|-----------------------------|
| SIZE | | 6 |
| MAX. FLOW RATE (L/MIN) | | 80 |
| OPERATING PRESSURE (MPA) | A, B, P PORTS | 31.5 |
| | T PORT | 16 |
| WEIGHT (KG) WITHOUT/WITH HANDLE | 1 SOLENOID | 1.6/2.2 |
| | 2 SOLENOIDS | 2.2/2.8 |
| VALVE BODY (MATERIAL) | | CASTING PHOSPHATING SURFACE |

CHARACTERISTIC CURVES

ΔP -Q CHARACTERISTIC CURVES



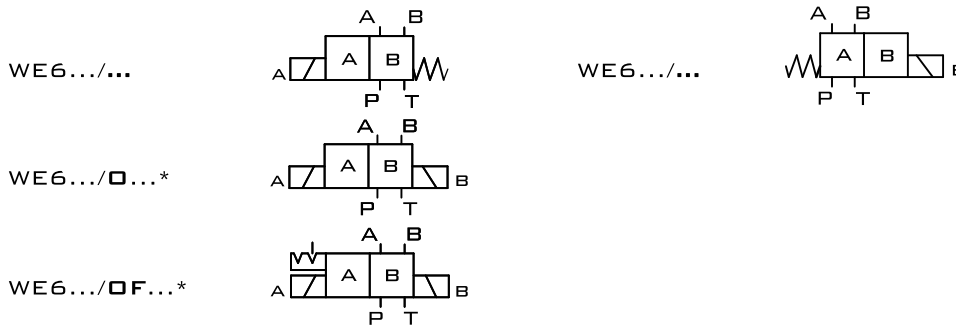
7 CURVE - SPOOL SYMBOL "R" IN SHIFTED POSITION B → A;
8 CURVE - SPOOL SYMBOL "G" AND "T" IN CENTRAL POSITION;
9 CURVE - SPOOL SYMBOL "H" AND "T" IN CENTRAL POSITION P → T.

| SPOOL SYMBOL | FLOW DIRECTION | | | |
|--------------|----------------|-------|-------|-------|
| | P - A | P - B | A - T | B - T |
| A, B | 3 | 3 | - | - |
| C | 1 | 1 | 3 | 1 |
| D, Y | 5 | 5 | 3 | 3 |
| E | 3 | 3 | 1 | 1 |
| F | 1 | 3 | 1 | 1 |
| G | 6 | 6 | 9 | 9 |
| H | 2 | 4 | 2 | 2 |
| J, Q | 1 | 1 | 2 | 1 |
| L | 3 | 3 | 4 | 9 |
| M | 2 | 4 | 3 | 3 |
| P | 3 | 1 | 1 | 1 |
| R | 5 | 5 | 4 | - |
| T | 10 | 10 | 9 | 9 |
| U | 3 | 3 | 9 | 4 |
| V | 1 | 2 | 1 | 1 |
| W | 1 | 1 | 2 | 2 |



SCHEMES

**SCHEMES OF 2-POSITION DIRECTIONAL SPOOL VALVES
VERSIONS WITH POSITIONS A, B**



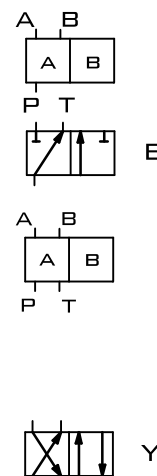
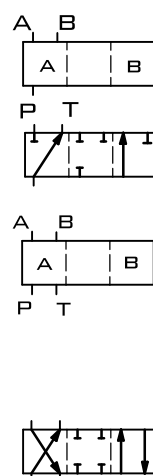
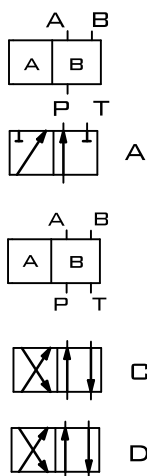
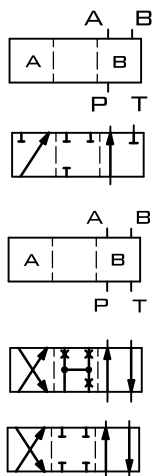
* - VERSIONS AVAILABLE ONLY FOR SPOOL SCHEMES: A, C, D

**WORKING AND
INDIRECT POSITIONS**

**WORKING
POSITIONS**

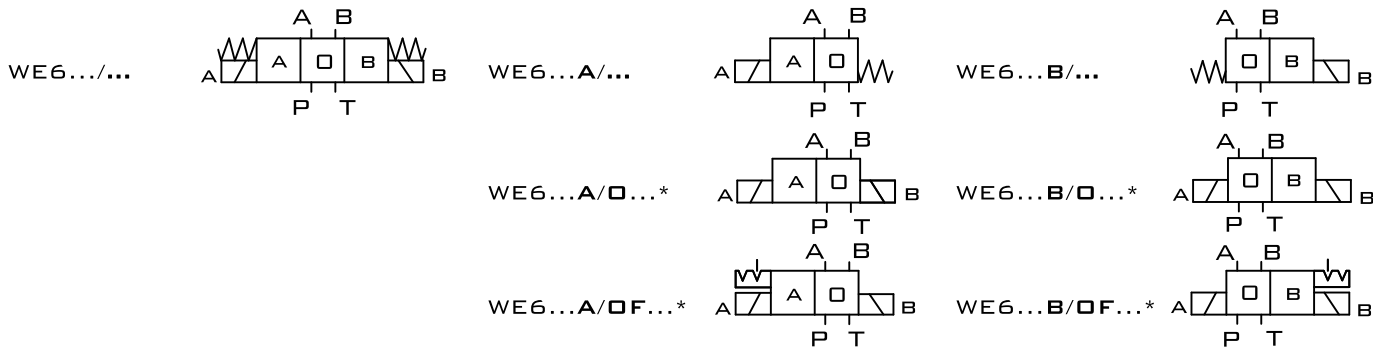
**WORKING AND
INDIRECT POSITIONS**

**WORKING
POSITIONS**



**SCHEMES OF 3-POSITION
DIRECTIONAL SPOOL VALVES**

**SCHEMES OF 2-POSITION DIRECTIONAL SPOOL VALVES
VERSIONS WITH POSITIONS A, O VERSIONS WITH POSITIONS O, B**



* - VERSIONS AVAILABLE ONLY FOR SPOOL SCHEMES: EA, GA, HA, JA, MA, EB, GB, HB, JB, MB

**SEE ALSO:
WE10, WEH**

SCHEMES

HYDRAULIC SCHEMES OF SPOOLS

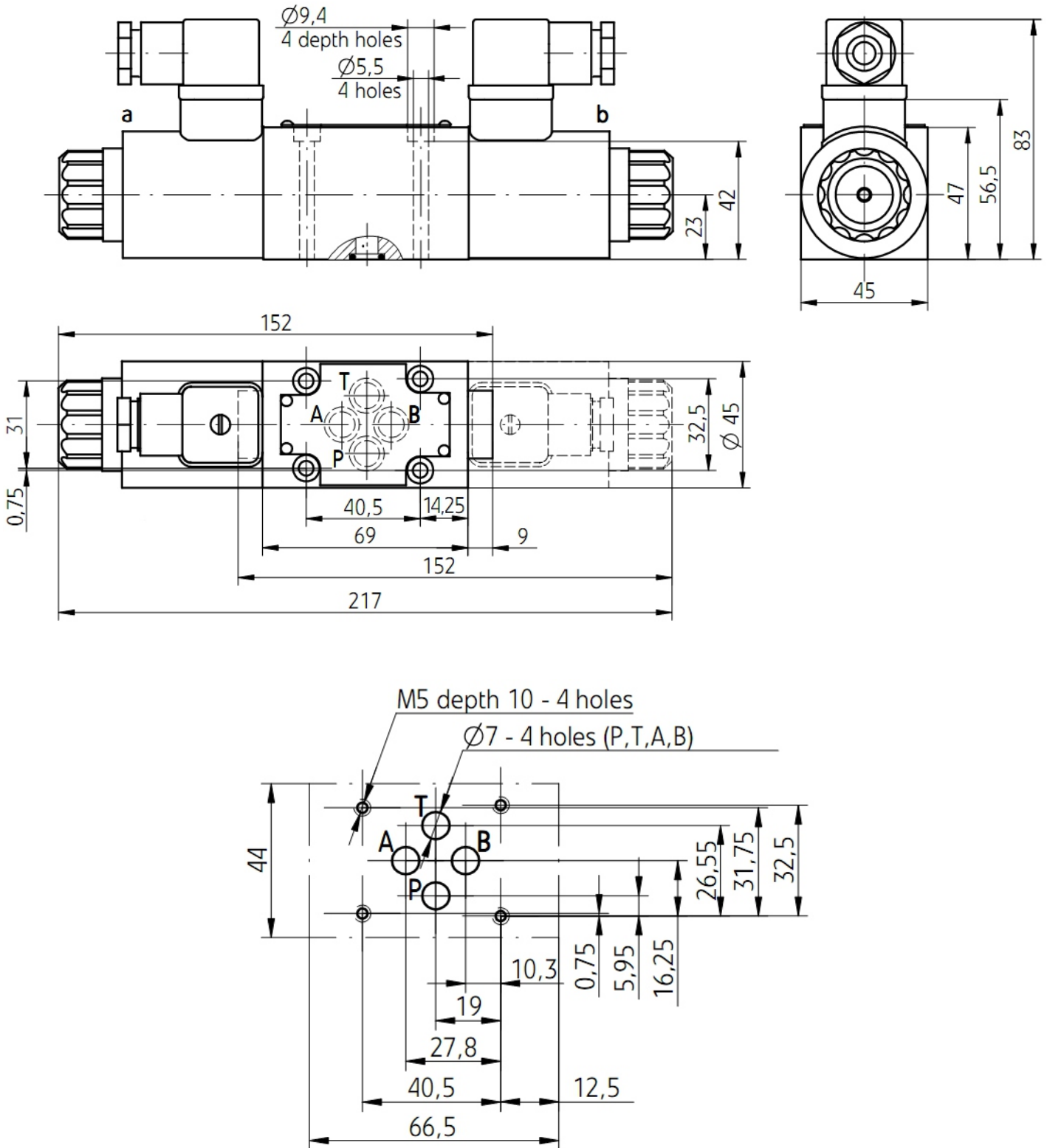
| WORKING AND INDIRECT POSITIONS | WORKING POSITIONS | WORKING AND INDIRECT POSITIONS | WORKING POSITIONS | WORKING AND INDIRECT POSITIONS | WORKING POSITIONS |
|-----------------------------------|----------------------|-----------------------------------|----------------------|-----------------------------------|----------------------|
| | | | | | |
| | | | | | |
| | | | | | |
| | | | | | |
| | | | | | |
| | | | | | |
| | | | | | |
| | | | | | |
| | | | | | |
| | | | | | |
| | | | | | |
| | | | | | |
| | | | | | |
| | | | | | |
| | | | | | |

* - FLOW SECTION FOR SPOOL W IN CENTRAL POSITION: 3 % NOMINAL FLOW



**SOLENOID OPERATED
DIRECTIONAL CONTROL VALVES**

SUBPLATE INSTALLATION DIMENSIONS



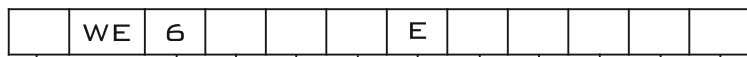


**DISTRIBUTORI
OLEODINAMICI**

WE6

SOLENOID OPERATED
DIRECTIONAL CONTROL VALVES

ORDER CODE



3=3-WAY
4=4-WAY

6=6 SIZE

SPOOL TYPE

6X=60-69 SERIES

NO CODE=WITH SPRING RETURN
 □=WITHOUT SPRING RETURN
 □F=WITHOUT SPRING RETURN
 WITH DETENT

E=STANDARD SOLENOID

NO CODE=NBR SEALS
 V=FKM SEALS

Z5L=SQUIRE PLUGS WITH LAMP

NO CODE=WITHOUT THROTTLE INSERT
 B0.8=THROTTLE 0.8 MM
 B1.0=THROTTLE 1.0 MM
 B1.2=THROTTLE 1.2 MM

N9=WITH CONCEALED HAND EMERGENCY

G12=DC12V
 G24=DC24V
 W110R=AC110V
 W220R=AC220V