

- and the height of the suction pipe shall not exceed the suction range of the pump.
- 4, the pipeline should be fixed, the pump is not allowed to bear the load of the pipeline, the installation height of the pump should be guaranteed not to exceed the allowable self-priming height when the pump is working.
 5. The suction piping system does not allow air leakage and liquid leakage.
 - 6, the pump should be prevented from inhaling solid impurities, so the suction pipe should be installed filter, filter should be cleaned regularly.
 - 7, after the installation of the pump and pipeline system, the pressure should be tested for 1.2 times the working pressure, which lasts for 3 minutes.

Pump maintenance

1. Clean the filter regularly (half a month) to avoid clogging and affecting the flow rate. Check and adjust the relief valve drain pressure frequently. If the pump is stopped for a long time, it should be treated with rust prevention and kept properly.
- 2.
- 3 Bearing lubricate once every six months.
- 4, regularly check the pump anchor bolts and each fastening nut for loosening phenomenon.
- 5, the rolling bearing long-term use wear to a certain extent, should be replaced in time

Contact

WENZHOU LIDUN MACHINERY EQUIPMENT CO., LTD

Add.: No.10 Weiyi Road, Lantian Industrial Zone, Wenzhou, China.

Tel: 0577-86855786

Phone: +86 15058902017

Postal code: 325000

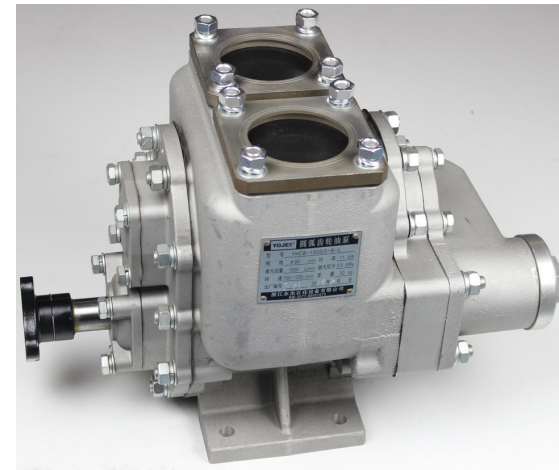
E-mail: tankerparts_lin@hotmail.com

SINCE 1997

Gear Pump

YHCB-1000/5B

Installation and Operation Instruction



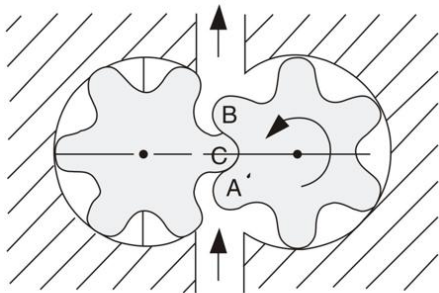
WENZHOU LIDUN MACHINERY EQUIPMENT CO., LTD

Product Introduction

YHCB type circular arc gear pump is composed of double circular arc gear, is a new product to adapt to the development of industrial oil pump demand, is a special high-efficiency gear pump, with large flow, high head, small volume, strong self-priming performance, easy installation, maintenance and so on. The pump can turn positive and negative, and the inlet and outlet of the oil depends on the steering. Among them, our improved pump YHCB1000-5B combines the safety valve device with the oil pump to simplify the pipeline system and achieve high efficiency and saving. It is especially suitable for installation on tanker trucks with refueling machines.

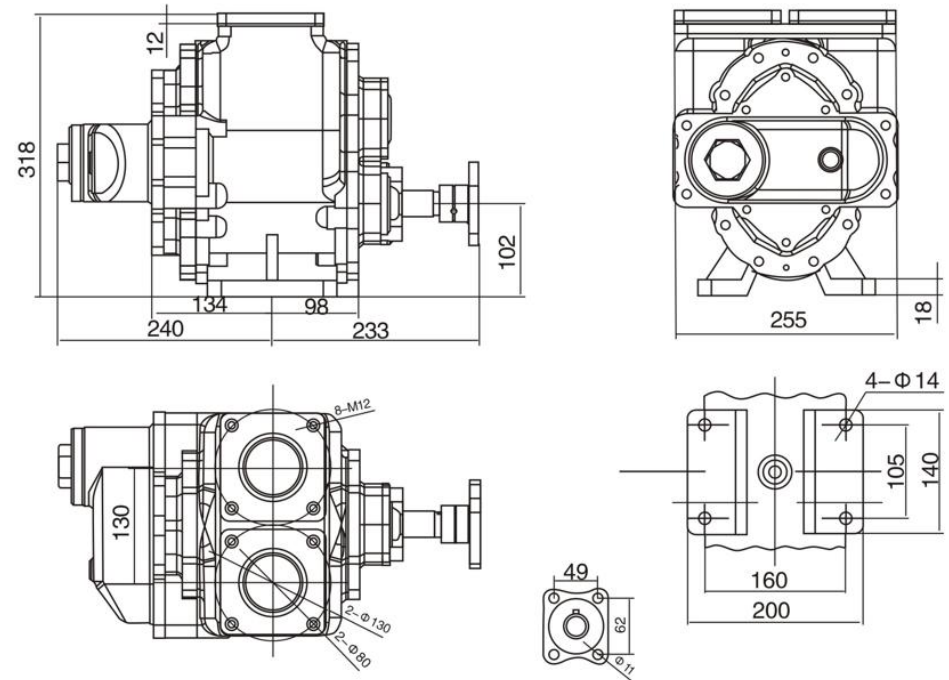
Product Feature

Arc gear pump is a kind of positive displacement pump, consisting of two gears, pump body and front and back cover composed of two closed Spaces, when the gear rotates, the volume of the gear off the room is small and large, forming a vacuum, the liquid is inhaled, the volume of the gear meshing side space is from the size, and the liquid is squeezed into the pipeline. The cavity is separated by the meshing lines of the two gears. The pressure of the gear pump outlet depends entirely on the resistance of the pump source.



(图一)

Install drawing:



Installation and maintenance

The pump can be installed in the refueling vehicle and the oil depot and the pump room of the oil depot S according to the design requirements of the installation oil circuit on the car, the oil circuit diagram shown in the manual can be referred to the outline and size of the installation size diagram.

When installing and using the refueling truck, note:

1. The pump is powered by the output shaft of the force extractor of the automobile transmission, and the pump is installed as far forward as possible, and the inclination Angle between the pump shaft and the drive shaft shall not be greater than 7°
- 2, the pump should be hoisted on the Angle welded hanger, the height of the pump can be determined according to the output axis of the force extractor, the left and right position of the pump should be as close to the beam as possible, so as not to interfere with the pump and the car drive shaft, and fixed on the car longitudinal beam with bolts.
- 3, the diameter of the suction pipe shall not be less than the diameter of the inlet,